





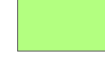

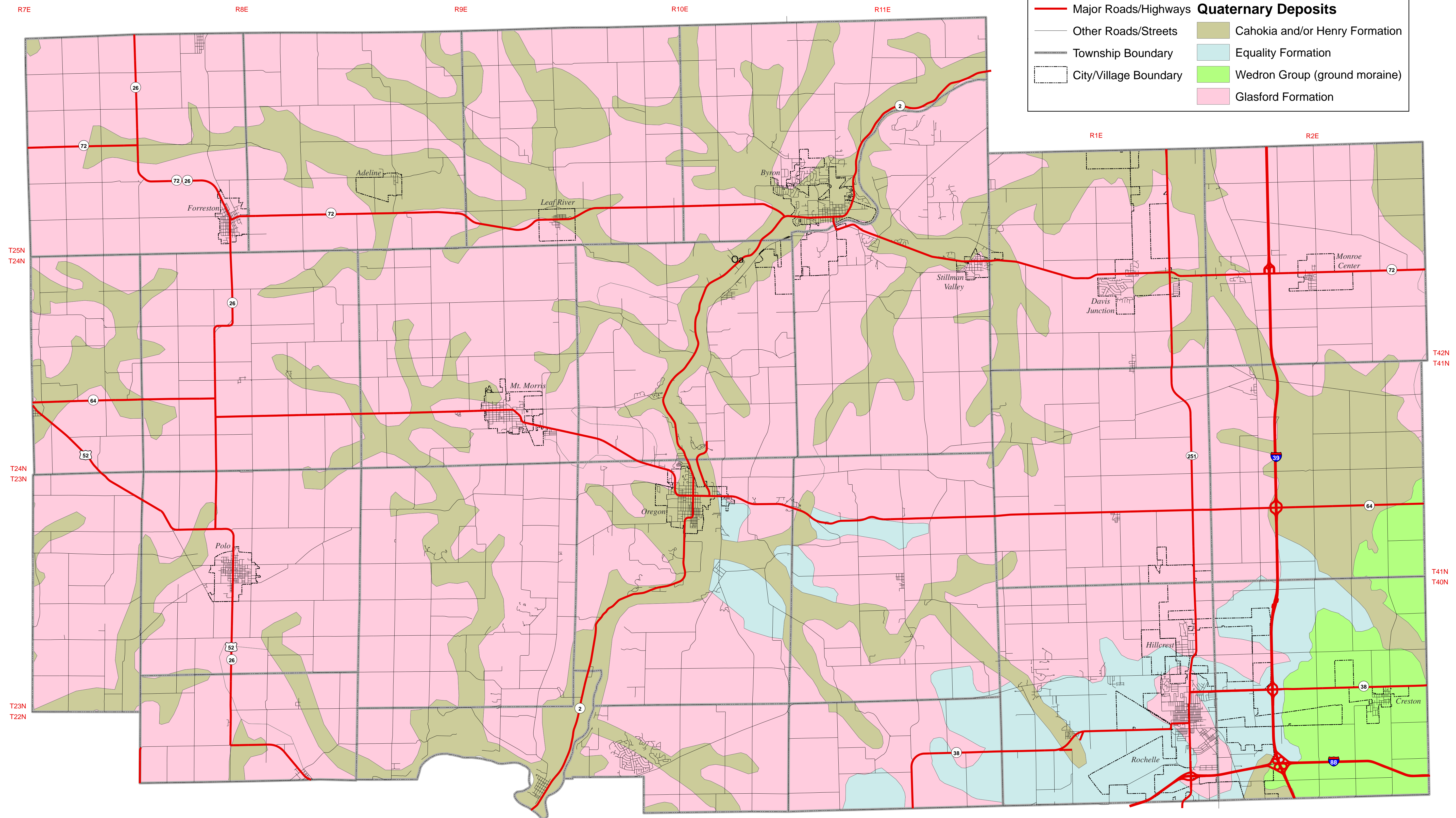


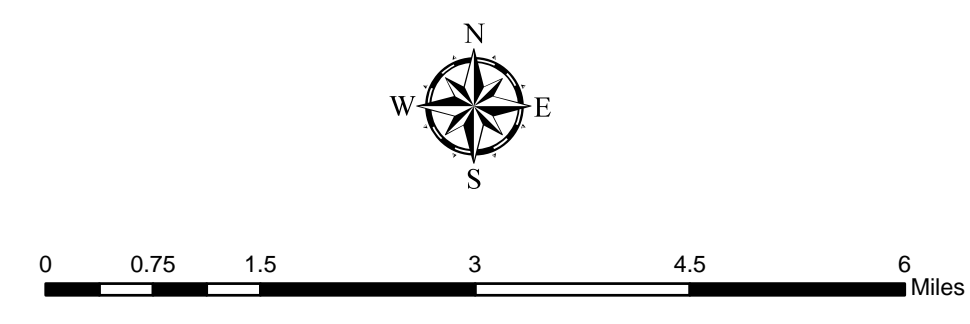
Quaternary Deposits in Ogle County, Illinois

Legend

| | |
|---|--|
|  Major Roads/Highways | Quaternary Deposits |
|  Other Roads/Streets |  Cahokia and/or Henry Formation |
|  Township Boundary |  Equality Formation |
|  City/Village Boundary |  Wedron Group (ground moraine) |
| |  Glasford Formation |



Data: Illinois State Geological Survey
 Cartography: Ogle County Planning & Zoning Department
 Coordinate System: NAD 1983 StatePlane Illinois West FIPS 1202 Feet
 Projection: Transverse Mercator
 Datum: North American 1983
 False Easting: 2,296,583.3333
 False Northing: 0.0000
 Central Meridian: -90.1667
 Scale Factor: 0.9999
 Latitude Of Origin: 36.6667
 Units: Foot US



Classification of Quaternary Materials:

1. The Cahokia and/or Henry Formation consists of waterlain river sediment and wind-blown beach sand.
2. The Equality Formation consists of fine-grained sediment deposited in lakes.
3. The Wedron Group consists of diamicton deposited as till and ice-marginal sediment from the Wisconsinian Glacial Episode.
4. The Glasford Formation consists of diamicton deposited as till and ice-marginal sediment from the Illinoian Glacial Episode.