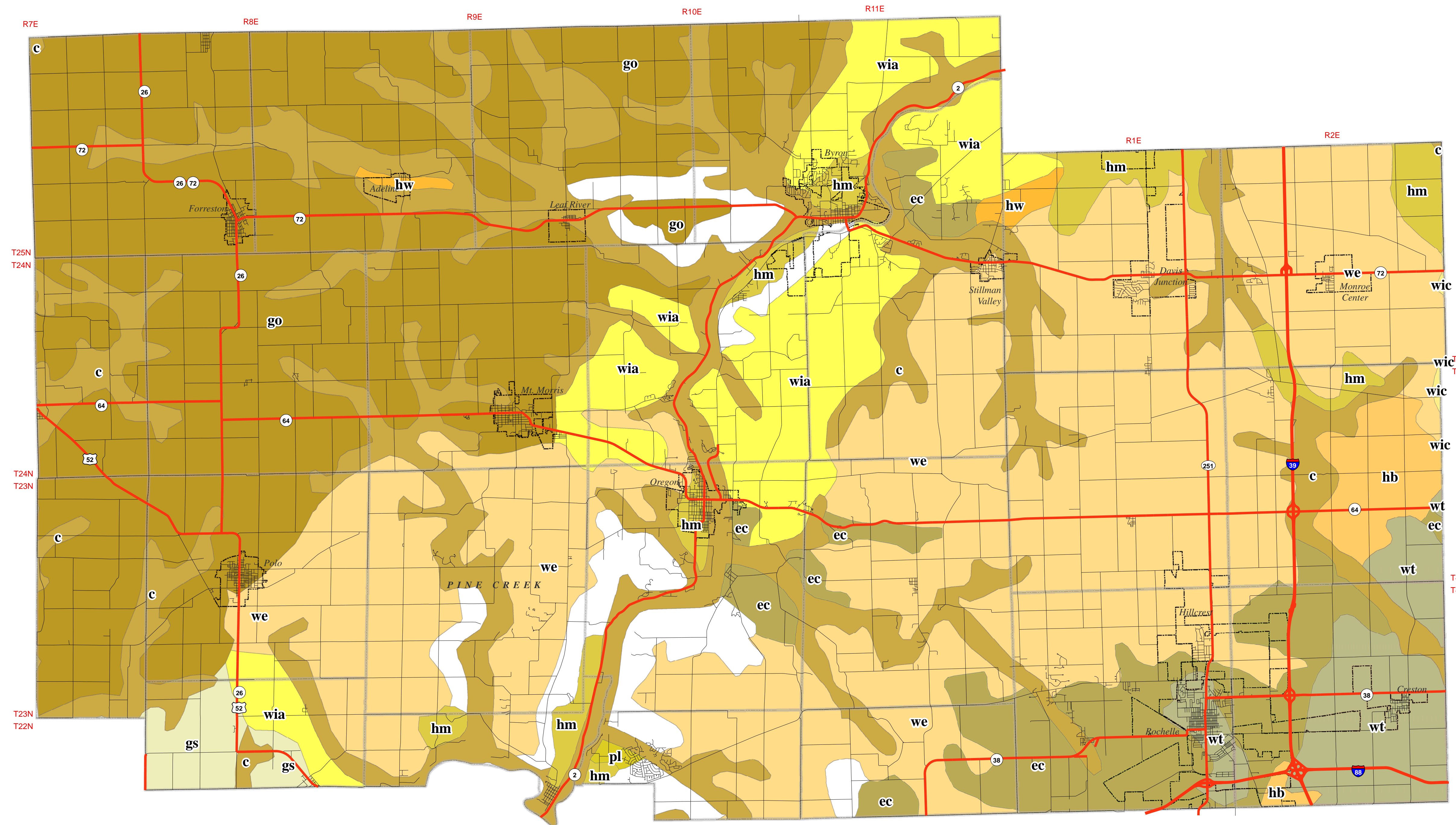


Quaternary Geology of Ogle County, Illinois



Legend

- Major Highways
- Other Roads/Streets
- Township Boundary
- City/Village Boundary

Quaternary Unit (Symbol)

- Argyle till member (wia)
- Batavia member (hb)
- Cahokia alluvium - includes alluvial fan facies (c)
- Capron till member (wic)
- Carmi member (ec)
- Esmond till member (we)
- Mackinaw member (hm)
- Ogle till member (go)
- Parkland sand (pl)
- Sterling till member (gs)
- Tiskilwa till (wt)
- Wasco member (hw)
- Not a quaternary deposit

- Classification of Quaternary Materials:**
1. The Batavia member, Cahokia alluvium, Esmond till member, Mackinaw member, Ogle till member, and Wasco member generally consist of waterlain river sediment and wind-blown beach sand.
 2. The Carmi member generally consists of fine-grained sediment deposited in lakes.
 3. The Argyle till member, Capron till member, Parkland sand, and Sterling till member generally consist of diamicton deposited as till and ice-marginal sediment from the Illinoian Glacial Episode.
 4. The Tiskilwa till member generally consists of diamicton deposited as till and ice-marginal sediment from both the Illinoian and Wisconsinan Glacial Episodes.

Data: Illinois State Geological Survey
 Cartography: Ogle County Planning & Zoning Department
 Coordinate System: NAD 1983 StatePlane Illinois West FIPS 1202 Feet
 Projection: Transverse Mercator
 Datum: North American 1983
 False Easting: 2,296,583.3333
 False Northing: 0.0000
 Central Meridian: -90.1667
 Scale Factor: 0.9999
 Latitude Of Origin: 36.6667
 Units: Foot US

