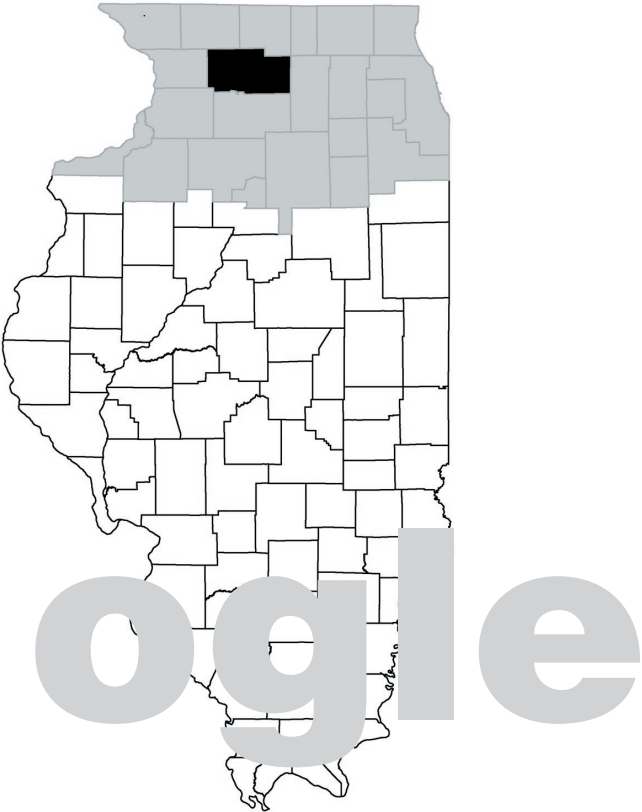


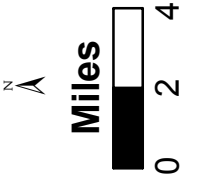
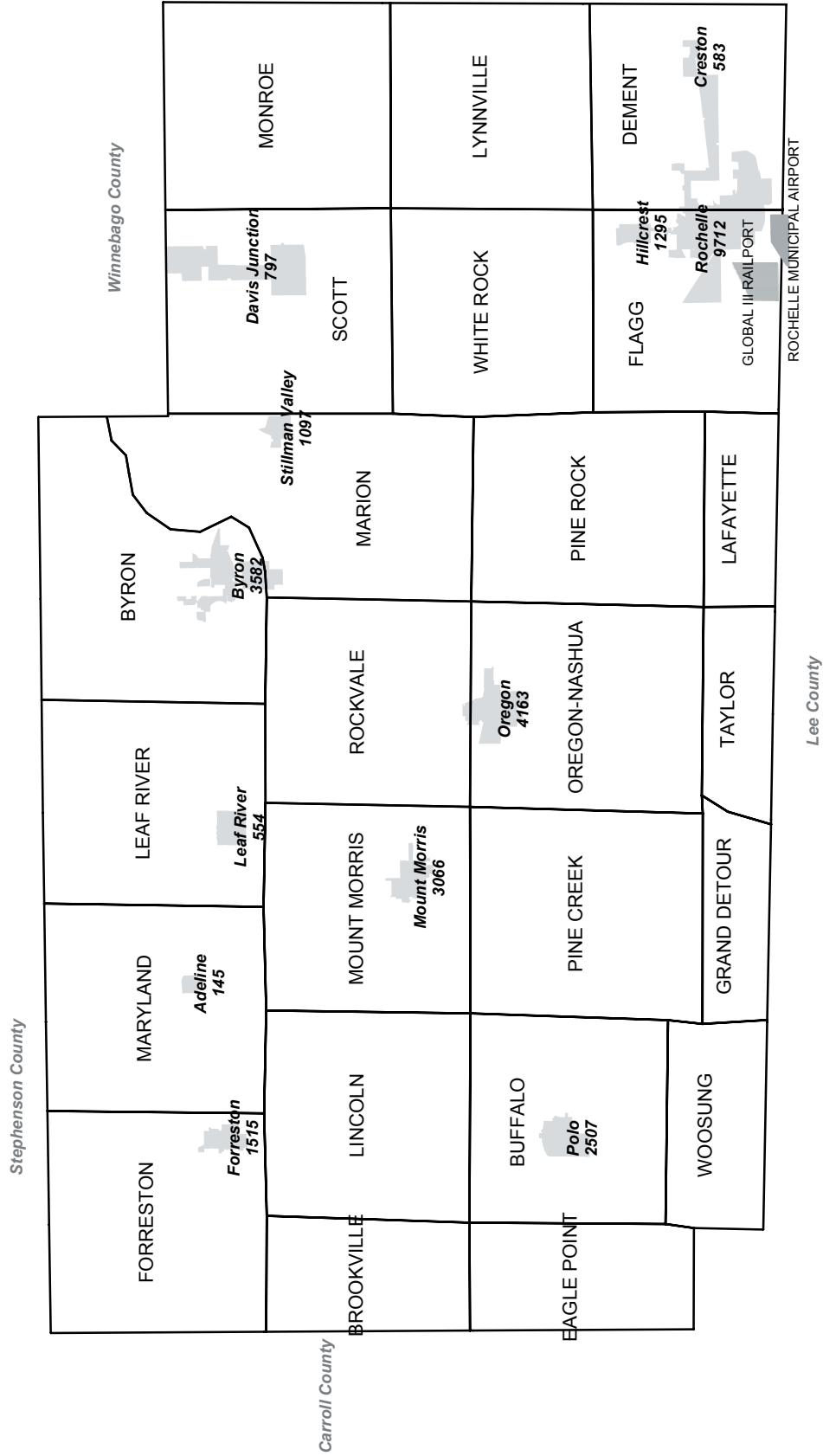
# Northern Illinois Market Facts

2 0 0 7



# Ogle County

## Places, Townships, Airport, and Railport



Note: Figures in each place are 2005 Census population estimates. Data for split places are reported by each county's portion. Map prepared by the Center for Governmental Studies, Regional Development Institute, NIU-Outreach.

# OGLE COUNTY

Population Density 2006  
72.2 persons  
per square mile

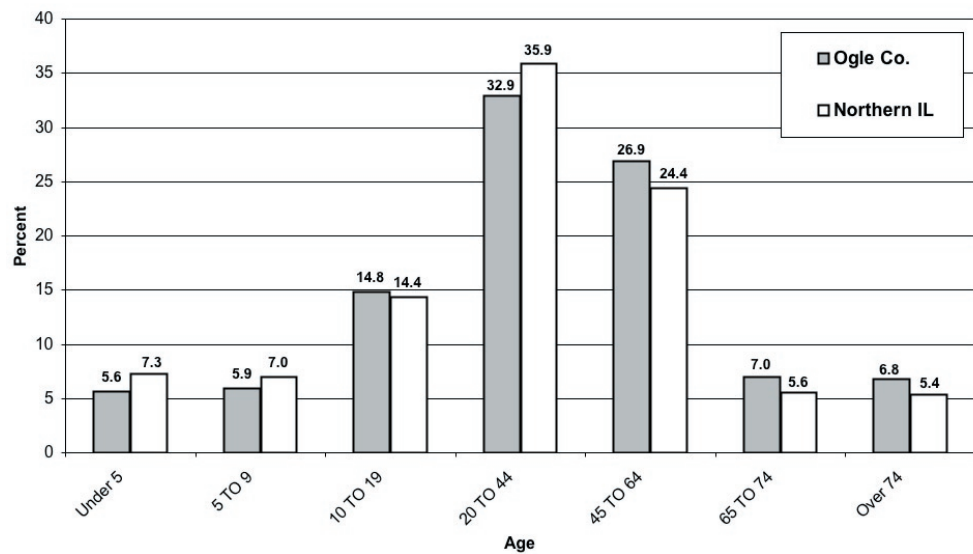
Median Age of  
County Population  
38.75

Figure 29A Population Trends and Projections

	Total 1990	Total 2000	Total 2006 (est.)	Total 2015 (proj.)
<b>Ogle Co. Population</b>	45,957	51,032	54,721	57,553
Percent of Northern Illinois	0.6%	0.6%	0.6%	0.6%

Sources: U.S. Census Bureau and Woods & Poole 2006  
Note: 1990, and 2000 are actual census counts. Census 2006 estimate = 54,826.  
2006 is a Woods & Poole estimate; 2015 is a Woods & Poole projection.

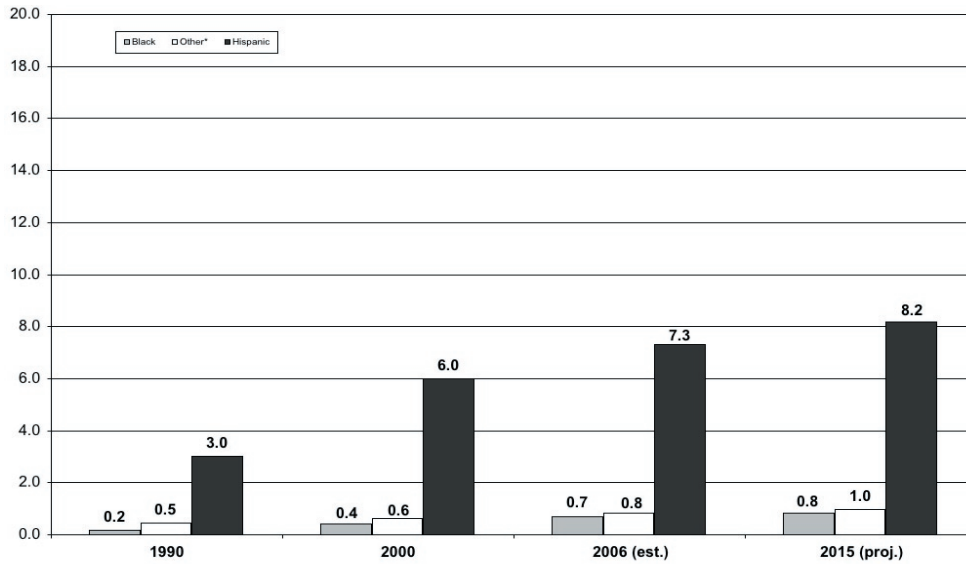
Figure 29B Age Distribution in 2006 by Percent of Population



Source: Woods & Poole, 2006  
Note: Numbers may not add up to 100.0% due to computer rounding.

**OGLE  
COUNTY**

**Figure 29C County Minority Population by Percent**



\*Other is Asian/Pacific Islander and American Indian.  
Sources: 1990, 2000 Census; Woods & Poole, 2006

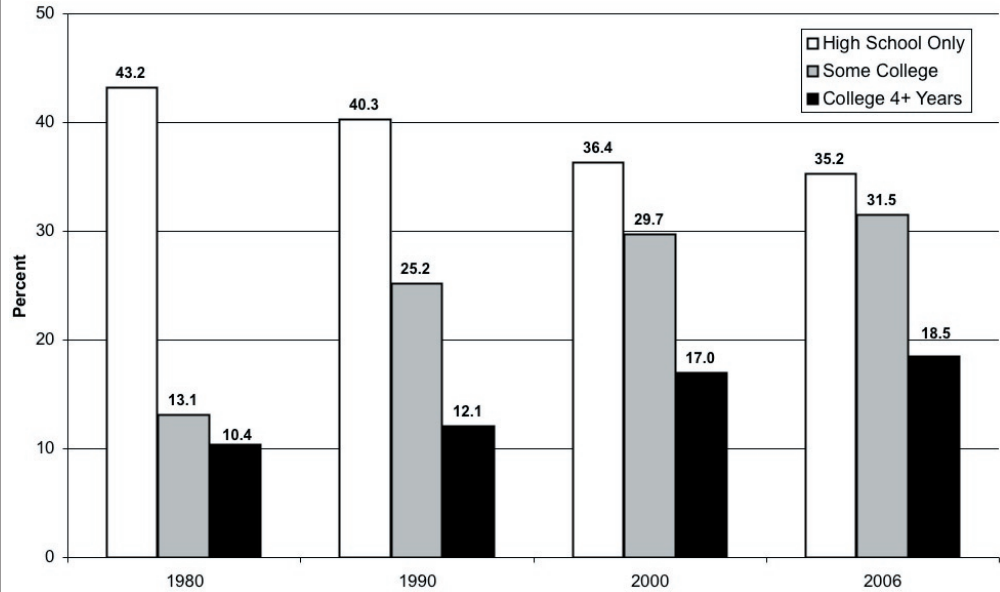
**Figure 29D Household Trends and Projections**

	1990	2000	2006 (est.)	2015 (proj.)
<b>Number of Households</b>	17,132	19,278	21,120	22,807
Percent of Northern Illinois	0.6%	0.6%	0.6%	0.6%
Ogle Co.: Persons per Household	2.65	2.62	2.56	2.50
Northern Illinois: Persons per Household	2.67	2.62	2.58	2.52

Source: 1990, 2000 Census; Woods & Poole, 2006

# OGLE COUNTY

Figure 29E Highest Educational Attainment: Percent of Persons Age 25 and Over



Sources: U.S. Census Bureau; Easy Analytic Software, Inc., 2006  
See Figure 3 in the Regional Section for comparisons.

Figure 29F General School Enrollment Information for Ogle County

K-12 Districts	5
Elementary Districts	4
High School Districts	1
<b>Students Enrolled 2005-2006</b>	<b>10,558</b>
Largest District Enrollment	1,835
Smallest District Enrollment	115
Number of Non-Public Schools*	1
<b>Non-Public School Enrollment 2006-2007</b>	<b>197</b>
Total 2005 Equalized Assessed Valuation Per Student	\$116,276
Estimated Average Property Tax Rate per \$100 in Assessment Year '05	\$7.87

Note: Data reflect all types of districts and have differing grade levels included.  
\*These data reflect only those schools reporting data 2006-2007.  
Sources: IL State Board of Education Fall Housing Reports; 2005 PTAX-250; CGS

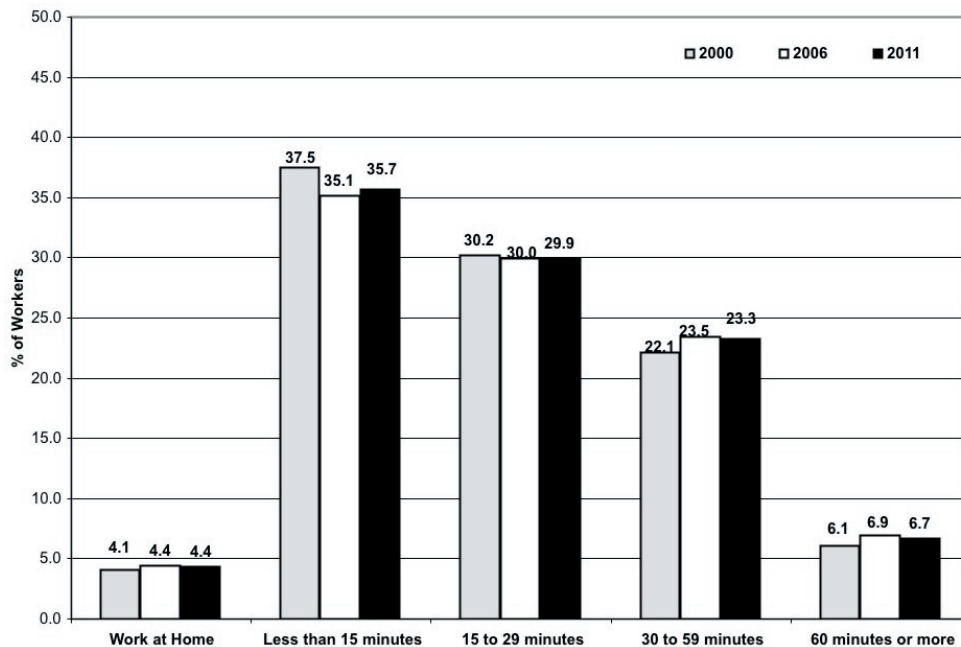
**OGLE  
COUNTY**

**Figure 29G Labor Force Participation Characteristics**

	1990	2000	2006
Total in Civilian Labor Force	23,779	26,013	27,742
% of persons 16 and over	68.7	67.2	67.3
% of persons 65 and over	15.3	13.8	8.5
% of women in labor force	59.2	59.8	60.5
% of labor force that is female	44.5	45.0	45.2
% self-employed	10.5	7.2	6.8
% white collar	44.3	53.4	54.0

Sources: U.S. Census Bureau, 2000; Easy Analytic Software, Inc., 2006;  
Longitudinal Employer - Household Dynamics, 2006  
Note: For residents 16 years old and over.

**Figure 29H Travel Time to Work, 2000, 2006, 2011**



Source: Easy Analytic Software, Inc., 2006

# OGLE COUNTY

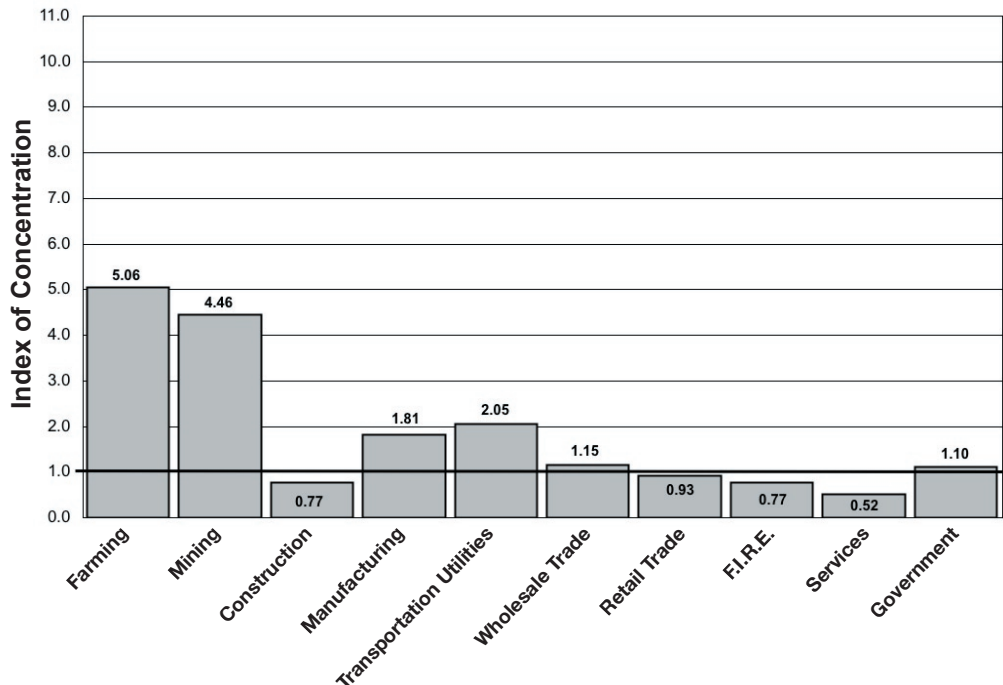
Note: Columns may not add up to 100.0% due to rounding. In some cases, historical data have been re-estimated.

Figure 29I Estimated Distribution of County Employment by Industry (Percent)

	Ogle 1990	N IL 1990	Ogle 2000	N IL 2000	Ogle 2006	N IL 2006
Farming	7.9%	0.6%	5.5%	0.5%	5.4%	0.4%
Ag Services/Forest & Fishing	1.4	0.6	1.7	0.8	1.5	0.9
Mining	0.3	0.2	0.3	0.1	0.3	0.1
Construction	4.8	4.7	3.9	4.9	3.9	5.0
Manufacturing	30.4	16.2	22.6	13.2	19.4	10.7
Transportation/Utilities	3.6	5.5	7.7	5.8	10.9	5.3
Wholesale Trade	4.1	6.6	6.7	5.7	6.1	5.3
Retail Trade	12.1	15.5	13.3	14.7	13.7	14.8
F.I.R.E.	4.5	9.6	6.8	9.7	7.8	10.1
Services	19.7	28.7	20.0	33.8	18.7	36.1
Government	11.3	11.8	11.5	10.9	12.2	11.1
<b>Total no. of jobs</b>	<b>20,665</b>	<b>4,863,719</b>	<b>25,508</b>	<b>5,626,109</b>	<b>24,734</b>	<b>5,747,149</b>

Source: Woods & Poole, 2006  
NOTE: employment measured by "place of work".

Figure 29J Concentration of County Employment by Industry Sectors, 2006

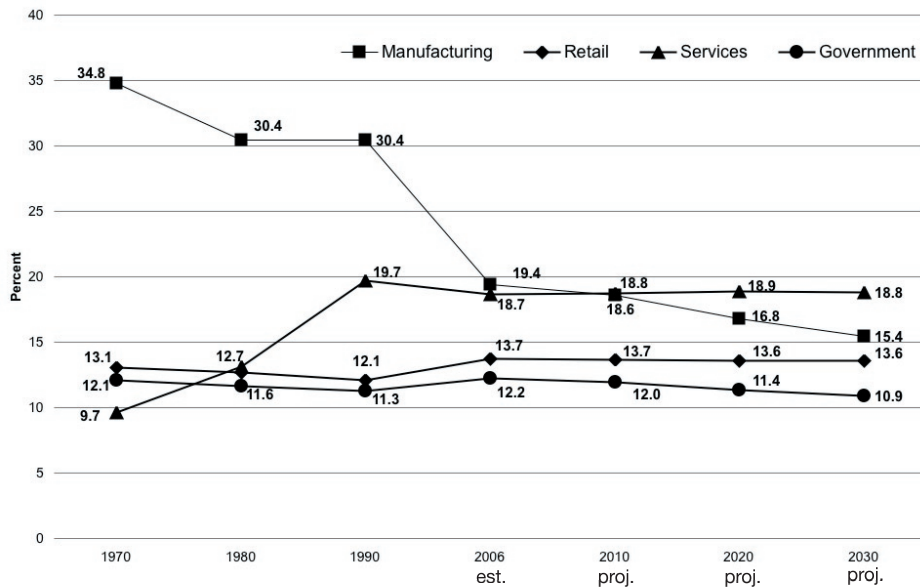


Sources: Woods & Poole 2006; Northern Illinois University

Note: Values greater than 1.0 indicate a local employment concentration greater than the same sector in the Northern Illinois region.

# OGLE COUNTY

**Figure 29K** Historic Distribution of Employment by Industry Sectors (Percent)



Source: Woods & Poole, 2006

**Figure 29L** Top Manufacturing Industries, 2004

	Employment	Establishments
Manufacturing Total	4,720	67
Machinery Manufacturing	1,284	15
Food Manufacturing	933	4
Printing & Related Support Activities	762	8
Fabricated metal Product Manufacturing	445	12
Transportation Equipment Manufacturing	250-499	1

**Changes in Top Manufacturing Industry Employment, 1998-2004**

	1998	2004
Manufacturing Total	5,807	4,720
Food Manufacturing	1,184	933
Printing & Related Support Activities	1,033	762
Machinery Manufacturing	731	1,284
Fabricated Metal Product Manufacturing	644	445
Computer & Electronic Product Manufacturing	499*	N/A

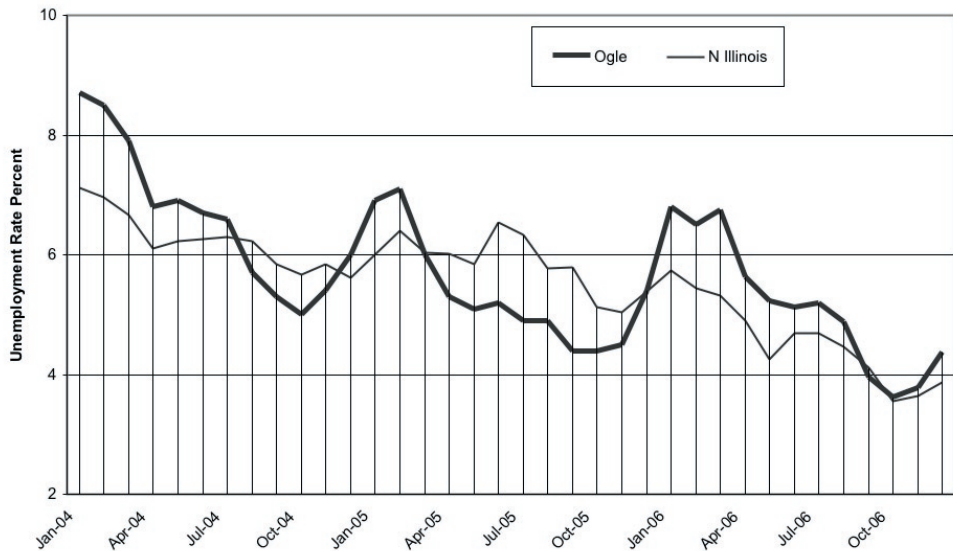
Source: County Business Patterns, 1998, 2004  
\*RDI estimates

# OGLE COUNTY

## State Annual Average

- 1998 - 4.5
- 1999 - 4.3
- 2000 - 4.3
- 2001 - 5.4
- 2002 - 6.5
- 2003 - 6.6
- 2004 - 6.1
- 2005 - 5.7
- 2006 - 4.5

Figure 29M Unemployment Rates by Month (Percent)



Source: Illinois Department of Employment Security

Figure 29N County Business Patterns 2004, North American Industrial Classifications (NAICS)

	Total Establishments	Number of Employees*	Avg. Annual Payroll/Employee*
Ag. Support, Forestry, Fishing and Hunting	3	NA	NA
Mining	8	102	\$42,627
Utilities	1	NA	NA
Construction	118	484	\$30,200
Manufacturing	73	5,807	\$28,860
Wholesale Trade	46	1,399	\$24,208
Retail Trade	134	1,415	\$17,101
Transportation & Warehousing	65	515	\$26,384
Information	14	215	\$42,093
Finance and Insurance	74	499	\$26,038
Real Estate & Rental & Leasing	33	77	\$12,091
Professional, Scientific & Technical Services	65	216	\$23,829
Mgmt. of Companies and Enterprises	2	NA	NA
Adm./Support and			
Waste Mgmt/Remediation Services	39	656	\$21,005
Educational Services	4	167	NA
Health Care & Social Assistance	77	1,200	\$16,348
Arts, Entertainment & Recreation	17	118	\$11,856
Accommodation & Food Services	87	886	\$8,889
Other Services (except Public Administration)	135	573	\$12,949
Unclassified	8	34	NA
<b>Total Establishments, Employment and Average Annual Pay</b>	<b>1,004</b>	<b>15,456</b>	<b>\$26,572</b>

\*Undisclosed employment totals for some industries have been estimated by CGS. Employment counts do not include government employment. Source: County Business Patterns, 2004.

NA: Data are not available to avoid disclosure and have not been estimated by NIU.

**OGLE  
COUNTY**

**Figure 29O Comparison of Equalized Assessed Valuations by Class of Property, 2003, 2004, 2005 (Thousands of Dollars)\***

	Assessment Years			% Change 04-05	2005 Average Tax Rate*
	2003	2004	2005		
Residential	\$512,946	\$525,394	\$564,035	7.4%	\$7.87
Farm	\$158,769	\$152,120	\$149,535	-1.7%	\$7.69
Commercial	\$69,457	\$74,926	\$78,001	4.1%	\$8.38
Industrial	\$512,903	\$517,244	\$425,242	-17.8%	\$6.56

Source: County Clerks' Offices PTAX 250

\*Average tax rate per \$100 of equalized assessed valuation.

**Figure 29P Residential Housing Information**

	1990	2000	2006
Housing Units	18,052	20,420	22,012
% Vacant Units	5.1%	5.6%	4.7%
Median Housing Value	\$57,200	\$102,700	\$109,096
Median Sale Price of Single Family Homes	\$68,900	\$104,550	\$139,400
Occupied Rental Units	4,930	4,909	5,062
Median Rent	\$252	\$401	\$389

Sources: 1990, 2000 Census of Population and Housing;  
Easy Analytic Software, 2006; Illinois Association of Realtors, 2006  
Note: Price is 3rd quarter median sale price.

**Figure 29Q Residential Migration Patterns**

	1990	2000
<b>Persons 5 yrs and older</b>	<b>42,615</b>	<b>47,846</b>
Residing in same house as 5 yrs ago	58.1%	58.6%
Lived in a different house in the U.S.	41.4%	39.9%
Same State	36.3%	35.5%
Residing in different house, same county	22.6%	20.7%
Residing in a different county	13.7%	14.8%
Different State	5.1%	4.4%
Lived Abroad	0.4%	1.5%
% Foreign Born of Total Population	1.9%	4.3%

Source: 1990, 2000 Census

## OGLE COUNTY

Foreign Owned  
Agricultural Land

1992      19 parcels  
            5,707 acres

1996      22 parcels  
            6,324 acres

2002      24 parcels  
            6,911 acres

Number of Farms in  
Ogle County

1982 - 1,406  
1987 - 1,312  
1992 - 1,141  
1997 - 1,099  
2002 - 1,129

Average Illinois  
Price Per Bushel

2004 est. for 2003  
    Corn \$2.14  
    Soybeans \$5.84

2005 est. for 2004  
    Corn \$2.08  
    Soybeans \$5.76

2006 est. for 2005  
    Corn \$3.35  
    Soybeans \$6.40

Figure 29R Land in Farms, 1997 and 2002

	1997	% of Total Land	2002	% of Total Land
Ogle Co. (acres)	389,195	79.3	372,285	75.9
Northern Illinois (acres)	5,832,569		5,616,194	

Source: U.S. Department of Agriculture, 2002 Census of Agriculture

Figure 29S Harvested Cropland, Total Market Value of Crops Sold, 1997 and 2002

	1997	% of Region Total	2002	% of Region Total
Ogle Co. Harvested Cropland (acres)	325,364	6.6	310,544	6.4
Northern Illinois Harvested Cropland (acres)	4,936,291		4,851,468	
Ogle Co. Market Value of Products Sold (\$1,000)	152,867	6.6	131,454	6.3
Northern Illinois Market Value of Products Sold (\$1,000)	2,311,234		2,089,310	

Source: U.S. Census Bureau, 2002 Census of Agriculture  
Note: Region now includes 22 Northern Illinois counties.

Figure 29T Major Crop Production

	2004	2005	2006
<b>Corn</b>			
Production (bushels)	37,352,000	29,996,200	35,889,500
Yield (bushels/acre)	184	139	179
% of Northern Total	7.4%	7.7%	7.7%
<b>Soybeans</b>			
Production (bushels)	5,290,000	4,434,400	5,481,000
Yield (bushels/acre)	50	46	54
% of Northern Total	5.9%	5.9%	6.1%

Source: Illinois Department of Agriculture, 2007

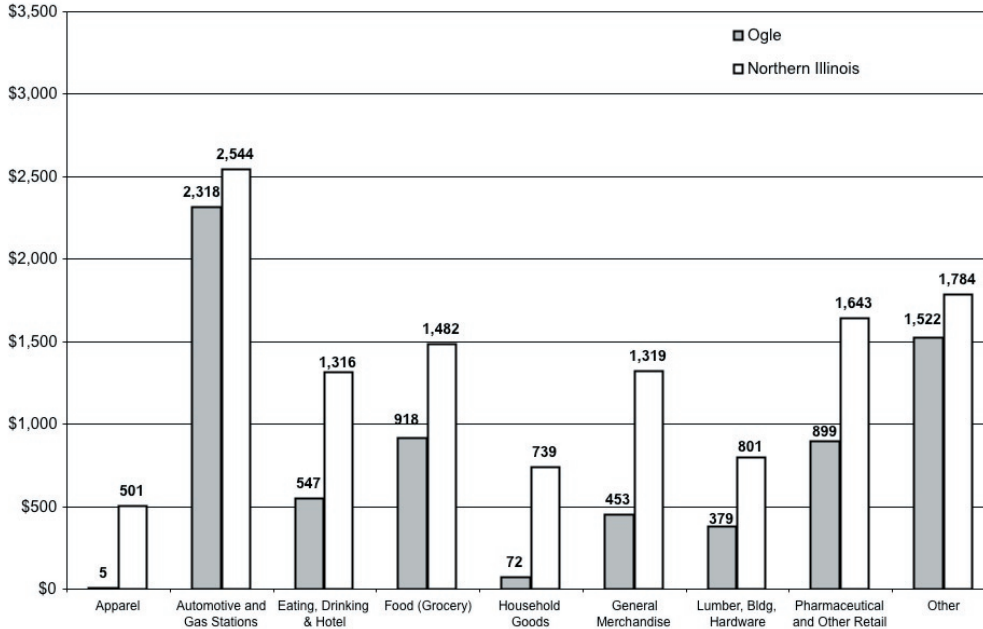
# OGLE COUNTY

Per Capita Retail Sales Totals

Ogle County  
\$7,112

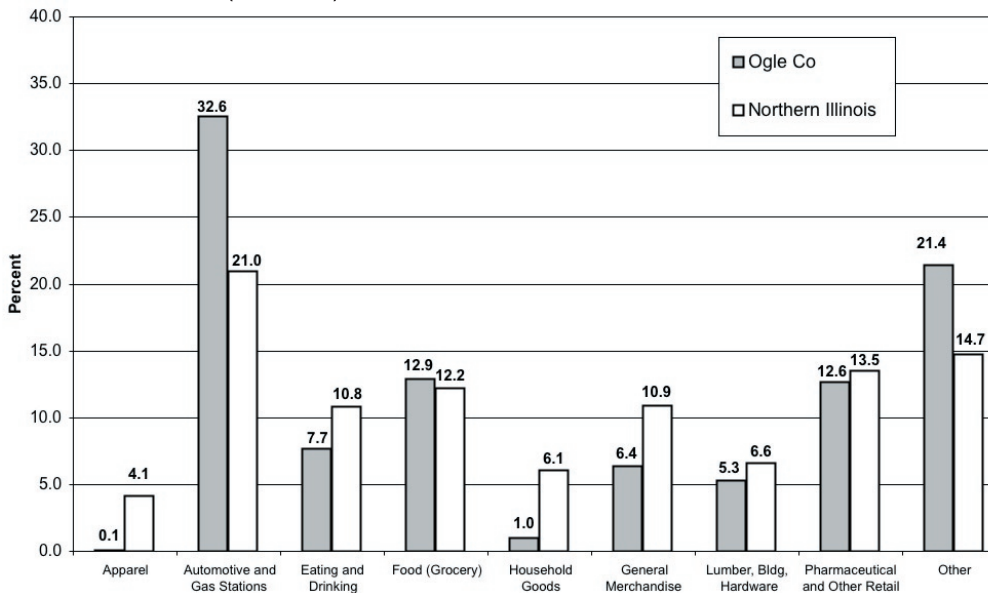
N Illinois Region  
\$12,129

Figure 29U Per Capita Retail Sales by Retail Stores in County, 2006 (Dollars)



Source: Illinois Department of Revenue, 2006; 2005 Census Estimates (2006)

Figure 29V Distribution of Sales by Retail Stores in County, 2006 (Percent)



Source: Illinois Department of Revenue, 2006

## OGLE COUNTY

Note: In some cases, historical data have been re-estimated.

Figure 29W Per Capita Income, 1990, 2000, and 2006 (estimated), Current Dollars

	1990	2000	2006 (est.)	Annualized % Change 2000-2006
Ogle Co.	\$16,744	\$ 25,980	\$ 28,590	1.6%
Northern IL	\$19,226	\$ 29,237	\$ 32,640	1.9%
Illinois	\$20,824	\$ 32,185	\$ 37,252	2.5%
		<b>County</b>	<b>State</b>	<b>U.S.</b>
2006 Wealth Index		85.30	106.12	100.00

Source: Woods & Poole, 2006

Figure 29X Household Income

	1990	2000	2006
Households w/Money Income	17,123	19,229	20,968
Less than \$25,000	37.8%	23.2%	20.8%
\$25,000-50,000	42.3%	32.1%	29.4%
\$50,001-100,000	18.6%	34.7%	36.0%
More than \$100,000	1.3%	10.0%	13.8%
Median Household Income	\$30,958	\$45,448	\$49,850

Source: U.S. Census Bureau; Easy Analytic Software, Inc., 2006

# OGLE COUNTY

Figure 29Y County Amenities

### Leisure and Recreation

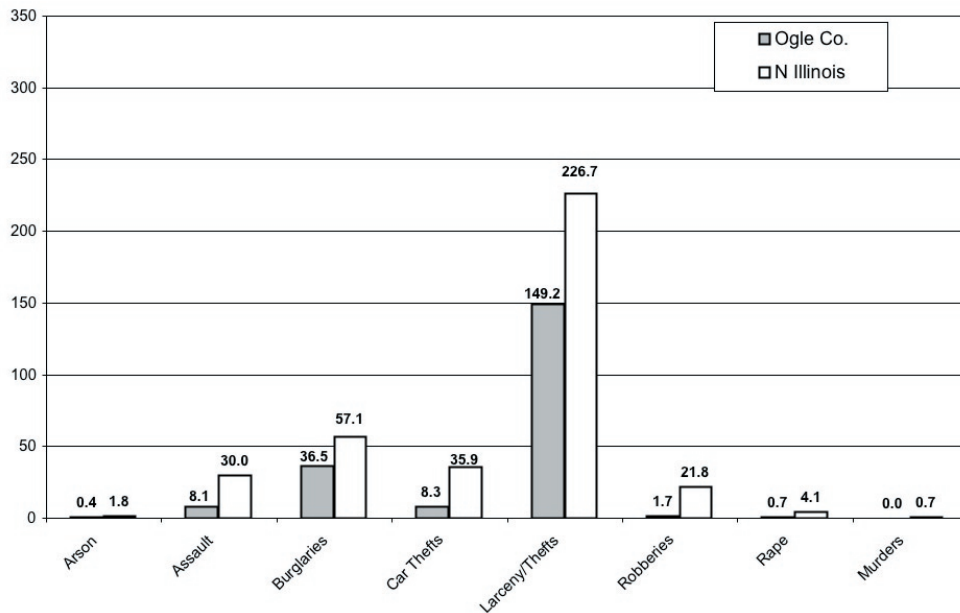
Museums	8
Forest Preserves/Conservation/Natural Areas	5
Golf Courses	3
State Parks	3

### Agritourism

Wineries	NA
Farmer's Markets	4
Seasonal Farm Attractions	NA

Note: All counts are estimates. Data changes as new facilities come on line.

Figure 29Z Criminal Offenses Reported in Lee County, 2006  
(Per 10,000 Persons)



Sources: Illinois State Police, 2006; US Census 2005 Population Estimate

Total Reported Index Crimes for 2005: 1112

Total Reported Index Crimes for 2004: 942

Total Reported Index Crimes for 2003: 991

# OGLE COUNTY

**Figure 29AA State Revenue Collections and Expenditures in Ogle County**

Revenues Collected (millions of dollars)	
State Sales and Use Taxes (2005)	\$16.2
Individual Income Taxes (est. FY 2001)	28.4
State Motor Fuel Tax (est. FY 2001)	8.2
Local Property Tax (2005)	91.3
State Expenditures (millions of dollars)	
Education (1999-2000)	\$26.4
Public Aid (FY 2006)	35.4
State Payroll (2006)	14.0

Sources: Illinois Legislative Research Unit, Illinois County Data Book, 2002; State of Illinois Office of the Comptroller, 2006; County Clerk's Office - PTAX 250

Average Daily Miles  
Travelled 2005  
1,935,146

Change 2004-2005  
0.1%

**Figure 29AB Proposed New State Expenditures for Highway Improvements in FY2007\***

Ogle County	Total	Per Mile
State Roads	\$ 4,100,000	\$ 21,448
Local Roads	\$ 400,000	\$ 284
Total Improvements	\$ 4,500,000	\$ 2,816
N IL Total Improvements	\$ 646,384,500	\$ 14,156

\*This is in addition to ongoing projects from previously funded improvement programs. These funds do not include local funds used for highway improvements.  
Source: Illinois Department of Transportation, Proposed Improvements for Illinois Highways FY 2007

**Figure 29AC Banking Resources in the County 2006\***

	Ogle County	N Illinois	Illinois
Commercial Banks	8	549	646
Offices	19	2,769	4,248
Deposits	\$785,000	\$243,761,000	\$292,870,000
Savings Institutions	3	109	100
Offices	4	483	582
Deposits	\$109,000	\$24,063,000	\$36,693,000
Offices per 10,000 Population	4.2	3.4	3.2
Total Deposits/County Population	\$16,467	\$28,151	\$25,821
Share of N/Illinois Deposits	0.3%	81.3%	
Deposit to Earnings Ratio	\$1,246	\$1,136	\$1,057
Deposit to Income Ratio	\$70	\$88	\$84

Source: FDIC Data Website 2006; US Census Population Estimates 2005; Woods & Poole 2006  
\*Data are for federally chartered banks only, dollars are in thousands.  
\*\*Non-disclosed data.

## OGLE COUNTY

Figure 29AD IRS Tax Returns Filed\* by Migrating Ogle County Residents 2003-2005

<b>Three Year Total (2003-2005)</b>	<b>Migrating Into County</b>	<b>Migrating Out of County</b>	<b>Net Change</b>
Total Movement	3,898	4,029	-131
Domestic Migration	3,898	4,001	-103
Same State	3,104	2,763	341
Different State	794	1,238	-444
Foreign Migration	0	28	-28

<b>Three Year Average (2003-2005)</b>	<b>Migrating Into County</b>	<b>Migrating Out of County</b>	<b>Net Change</b>
Estimated Median Reported Income	\$26,304	\$21,155	\$5,148
Aggregate Reported Income (\$000)	\$49,995	\$44,918	\$5,077

Source: U.S. Internal Revenue Service, County Migration Flows 2005.  
 \*This count is roughly equivalent to the number of households moving in and out of the county.

Figure 29AE Trade Area Analysis of Retail Sales, 2006

<b>Merchandise Group</b>	<b>Potential Purchases by County Residents</b>	<b>Sales Reported by County Merchants</b>	<b>Surplus or Leakage</b>	<b>Ratio of County Per Capita Sales to State Per Capita Sales</b>
General Merch.	\$772,852	\$233,980	-\$538,872	27.8%
Food	\$731,551	\$470,870	-\$260,681	59.0%
Eating/Drinking	\$661,036	\$327,222	-\$333,814	45.4%
Apparel	\$222,114	\$2,920	-\$219,193	1.2%
Home Furnishings	\$351,081	\$46,709	-\$304,371	12.2%
Building Merch.	\$400,253	\$195,058	-\$205,195	44.7%
Filling Stations	\$1,391,679	\$1,369,573	-\$22,106	90.3%
Drugs/Other Retail	\$853,554	\$493,941	-\$359,613	53.1%
Agriculture	\$793,841	\$789,217	-\$4,624	91.2%
Manufacturing	\$165,602	\$162,616	-\$2,985	90.1%
<b>Total Sales</b>	<b>\$6,343,562</b>	<b>\$4,092,106</b>	<b>-\$2,251,455</b>	<b>59.1%</b>

Source: Illinois Department of Revenue, 2006, Kind of Business Report, and U.S. Census Bureau County Business Patterns. Note: Potential Sales is derived from the county population times the state average per capita spending in each category times the ratio of county per capita income to state per capita income.