

Ogle County Planning & Zoning Department

911 W. Pines Road
Oregon, IL 61061
815-732-1190
Fax: 815-732-2229

Calendar Year 2010 Statistics Compiled by the Ogle County Planning & Zoning Department

- TABLE: *2010 Township Dwelling Starts and Percent of Total - Unincorporated Ogle County*
- MAP: *Dwelling Starts In Calendar Year 2010, Ogle County, IL (Unincorporated)*
- TABLE: *Zoning Certificates Issued 1970-2010 - Unincorporated Ogle County*
- CHART: *Zoning Certificates Issued 1970-2010 - Unincorporated Ogle County*
- CHART: *Dwelling Starts 1970-2010 - Unincorporated Ogle County*

Miscellaneous Statistical Information:

- ▶ Total Number of Zoning Certificates Issued: **271 (Non-Agricultural = 224; Agricultural = 47)**
- ▶ Estimated Value of Dwelling Starts: **\$4,962,000**
- ▶ Average Estimated Value per Dwelling: **\$215,739**
- ▶ Number of Map Amendment Petitions Filed: **7**
- ▶ Number of Special Use Permit Petitions Filed: **13**
- ▶ Number of Variation Petitions Filed: **14**
- ▶ Number of Zoning Ordinance Violation Notices Issued: **13**

Subdivisions Approved:

Minerva Freeze Addition to Maryland Township Subdivision (2 lots)

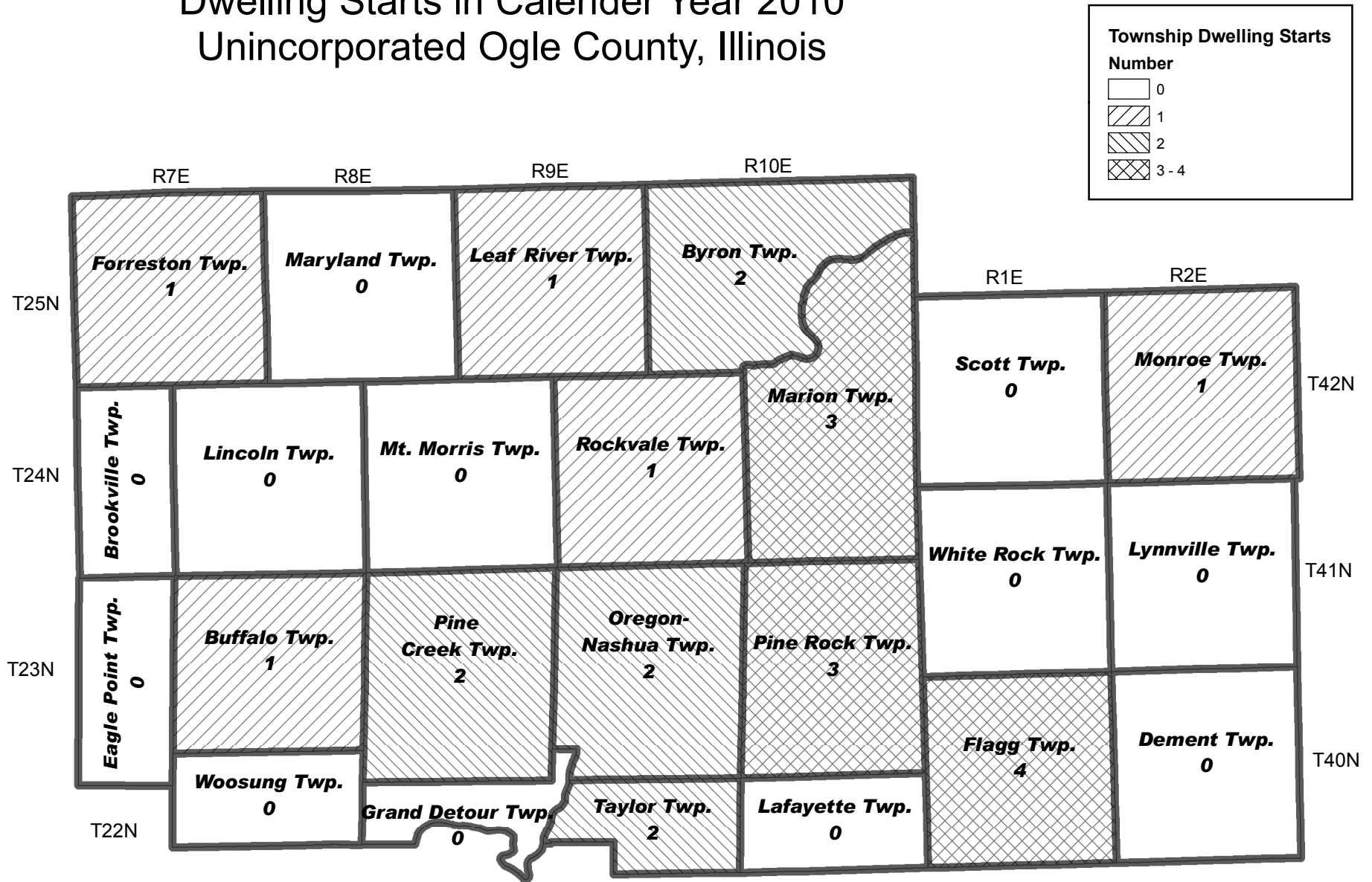
**2010 Township Dwelling Starts and Percent of Total
Unincorporated Ogle County**

Township	Dwelling Starts	% of Total
Flagg	4	17.3%
Marion	3	13.0%
Pine Rock	3	13.0%
Byron	2	8.8%
Oregon-Nashua	2	8.8%
Pine Creek	2	8.8%
Taylor	2	8.8%
Buffalo	1	4.3%
Forreston	1	4.3%
Leaf River	1	4.3%
Monroe	1	4.3%
Rockvale	1	4.3%
Brookville	0	0%
Dement	0	0%
Eagle Point	0	0%
Grand Detour	0	0%
Lafayette	0	0%
Lincoln	0	0%
Lynnville	0	0%
Maryland	0	0%
Mt. Morris	0	0%
Scott	0	0%
White Rock	0	0%
Woosung	0	0%
Total:	23	100%

Source: Ogle County Planning & Zoning Department

Dwelling Starts in Calendar Year 2010

Unincorporated Ogle County, Illinois

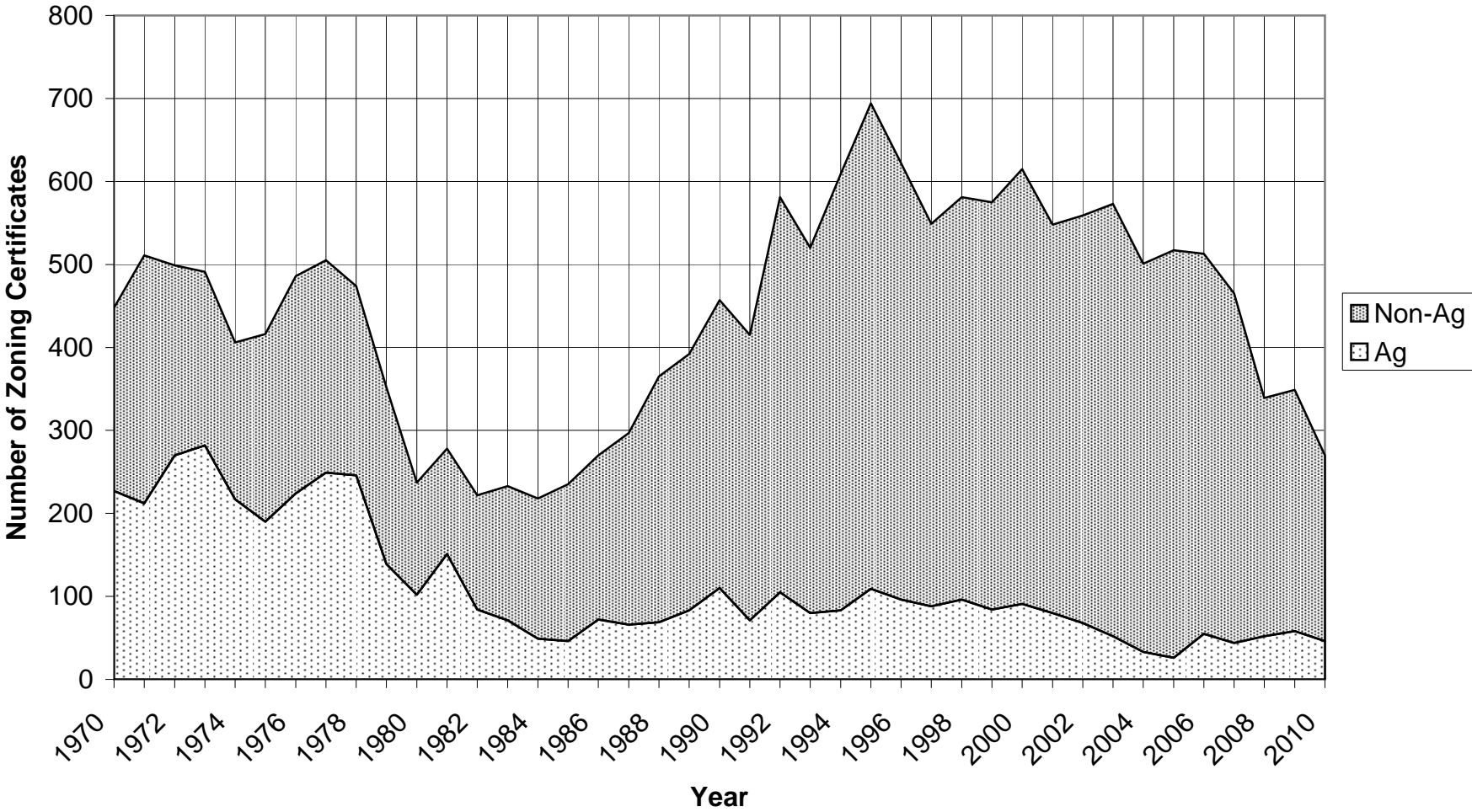


ZONING CERTIFICATES ISSUED 1970-2010 - UNINCORPORATED OGLE COUNTY

Year	Non-Agricultural	Agricultural	Dwellings
1970	221	227	104
1971	299	212	142
1972	229	270	146
1973	209	282	152
1974	189	217	126
1975	226	190	154
1976	262	224	209
1977	256	249	201
1978	228	246	206
1979	213	139	106
1980	135	102	63
1981	127	151	49
1982	138	84	40
1983	162	71	58
1984	169	49	51
1985	189	46	63
1986	198	72	63
1987	231	66	94
1988	296	69	127
1989	309	83	121
1990	347	110	169
1991	344	71	145
1992	476	105	217
1993	440	80	168
1994	526	83	208
1995	585	109	208
1996	526	96	157
1997	461	88	130
1998	485	96	145
1999	491	84	146
2000	524	91	117
2001	468	80	124
2002	491	68	122
2003	521	52	116
2004	468	33	100
2005	491	26	132
2006	457	54	122
2007	421	44	85
2008	287	52	50
2009	291	58	32
2010	224	46	23

Source: Ogle County Planning & Zoning Department

ZONING CERTIFICATES ISSUED 1970-2010 OGLE COUNTY UNINCORPORATED



**DWELLING STARTS 1970 - 2010
OGLE COUNTY UNINCORPORATED**

