

Ogle County Planning & Zoning Department

911 W. Pines Road
Oregon, IL 61061
815-732-1190
Fax: 815-732-2229

Calendar Year 2008 Statistics Compiled by the Ogle County Planning & Zoning Department

- TABLE: *2008 Township Dwelling Starts and Percent of Total - Unincorporated Ogle County*
- MAP: *Dwelling Starts In Calendar Year 2008, Ogle County, IL (Unincorporated)*
- PIE CHART: *Dwelling Starts as Percent of total 2008 - Ogle County (Unincorporated)*
- TABLE: *Zoning Certificates Issued 1970-2008 - Unincorporated Ogle County*
- CHART: *Zoning Certificates Issued 1970-2008 - Unincorporated Ogle County*
- CHART: *Dwelling Starts 1970-2008 - Unincorporated Ogle County*

Miscellaneous Statistical Information:

- Total Number of Zoning Certificates Issued: **339 (Non-Agricultural = 287; Agricultural = 52)**
- Estimated Value of Dwelling Starts: **\$11,222,500**
- Average Estimated Value per Dwelling: **\$224,450**
- Number of Map Amendment Petitions Filed: **6**
- Number of Special Use Permit Petitions Filed: **9**
- Number of Variation Petitions Filed: **9**
- Number of Zoning Ordinance Violation Notices Issued: **34**

Subdivisions Approved:

Sittnick Subdivision (Residential Subdivision) - 2 lots
Goldie Acres/Creason (Residential Subdivision) - 3 lots
Eagle Reserve Plat No. 1 (Residential Subdivision) - 23 lots
Hughes Subdivision (Residential Subdivision) - 1 lot

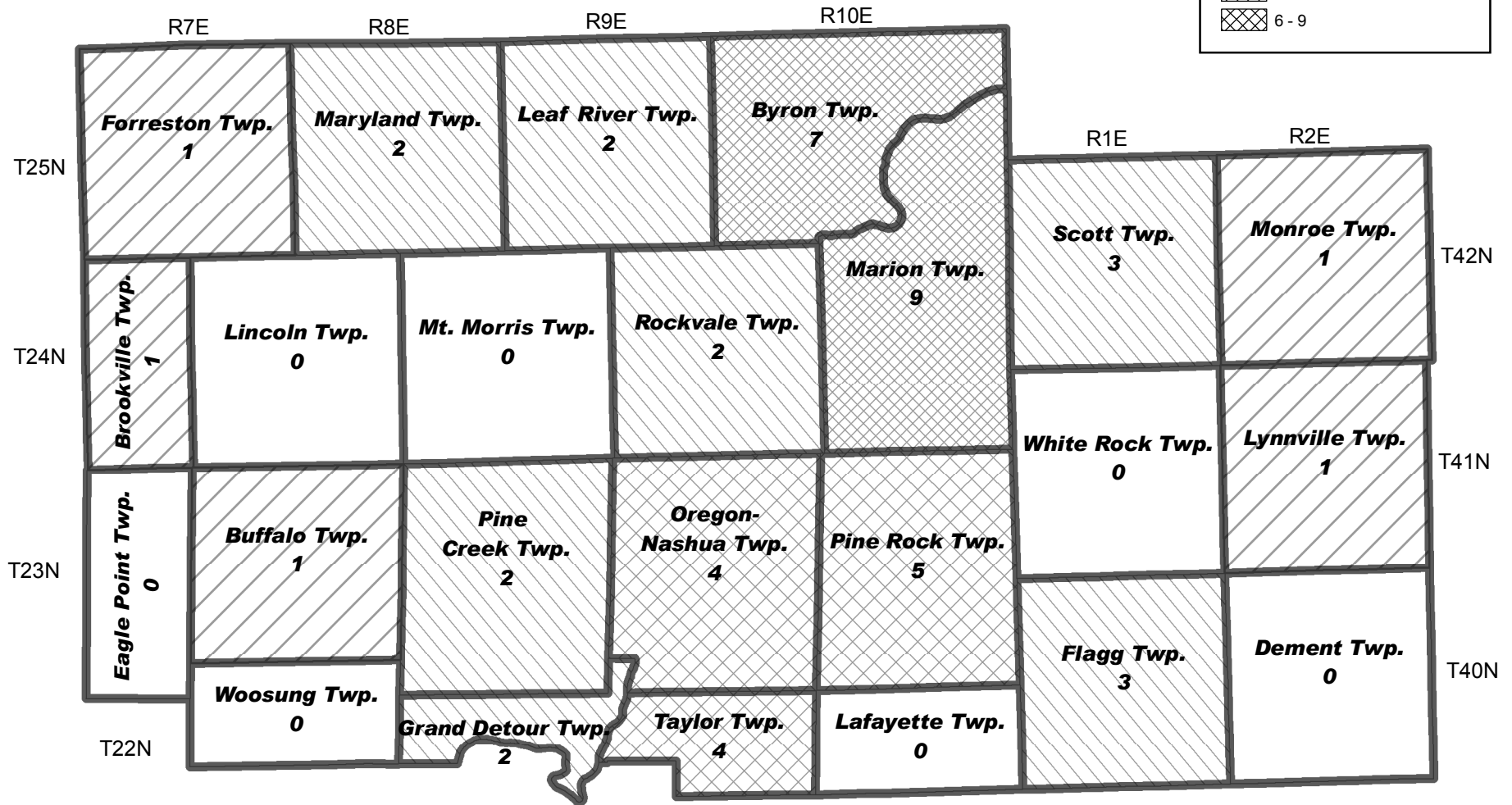
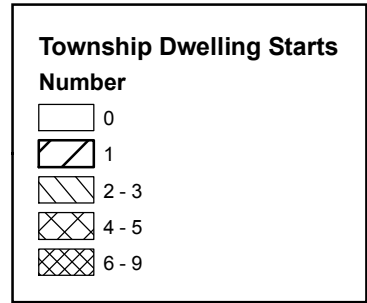
**2008 Township Dwelling Starts and Percent of Total
Unincorporated Ogle County**

Township	Dwelling Starts	% of Total
Marion	9	18.0%
Byron	7	14.0%
Pine Rock	5	10.0%
Oregon-Nashua	4	8.0%
Taylor	4	8.0%
Flagg	3	6.0%
Scott	3	6.0%
Grand Detour	2	4.0%
Leaf River	2	4.0%
Maryland	2	4.0%
Pine Creek	2	4.0%
Rockvale	2	4.0%
Brookville	1	2.0%
Buffalo	1	2.0%
Forreston	1	2.0%
Lynnville	1	2.0%
Monroe	1	2.0%
Dement	0	0%
Eagle Point	0	0%
Lafayette	0	0%
Lincoln	0	0%
Mt. Morris	0	0%
White Rock	0	0%
Woosung	0	0%
Total:	50	100%

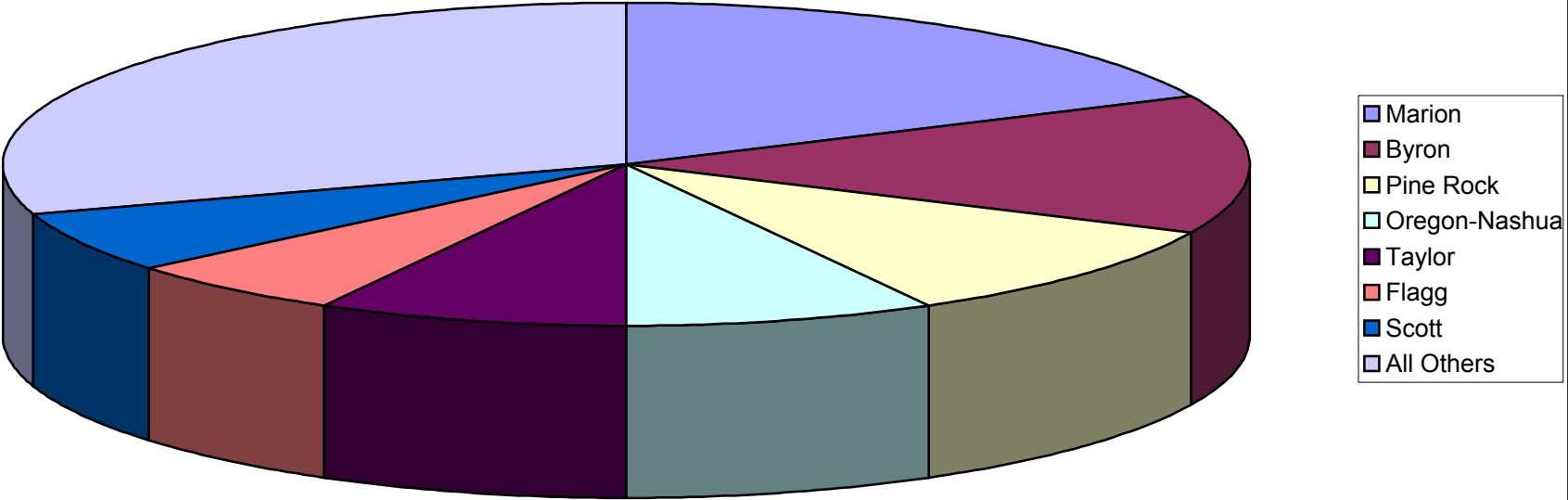
Source: Ogle County Planning & Zoning Department

Dwelling Starts in Calender Year 2008

Unincorporated Ogle County, Illinois



2008 OGLE COUNTY DWELLING STARTS AS PERCENT OF TOTAL



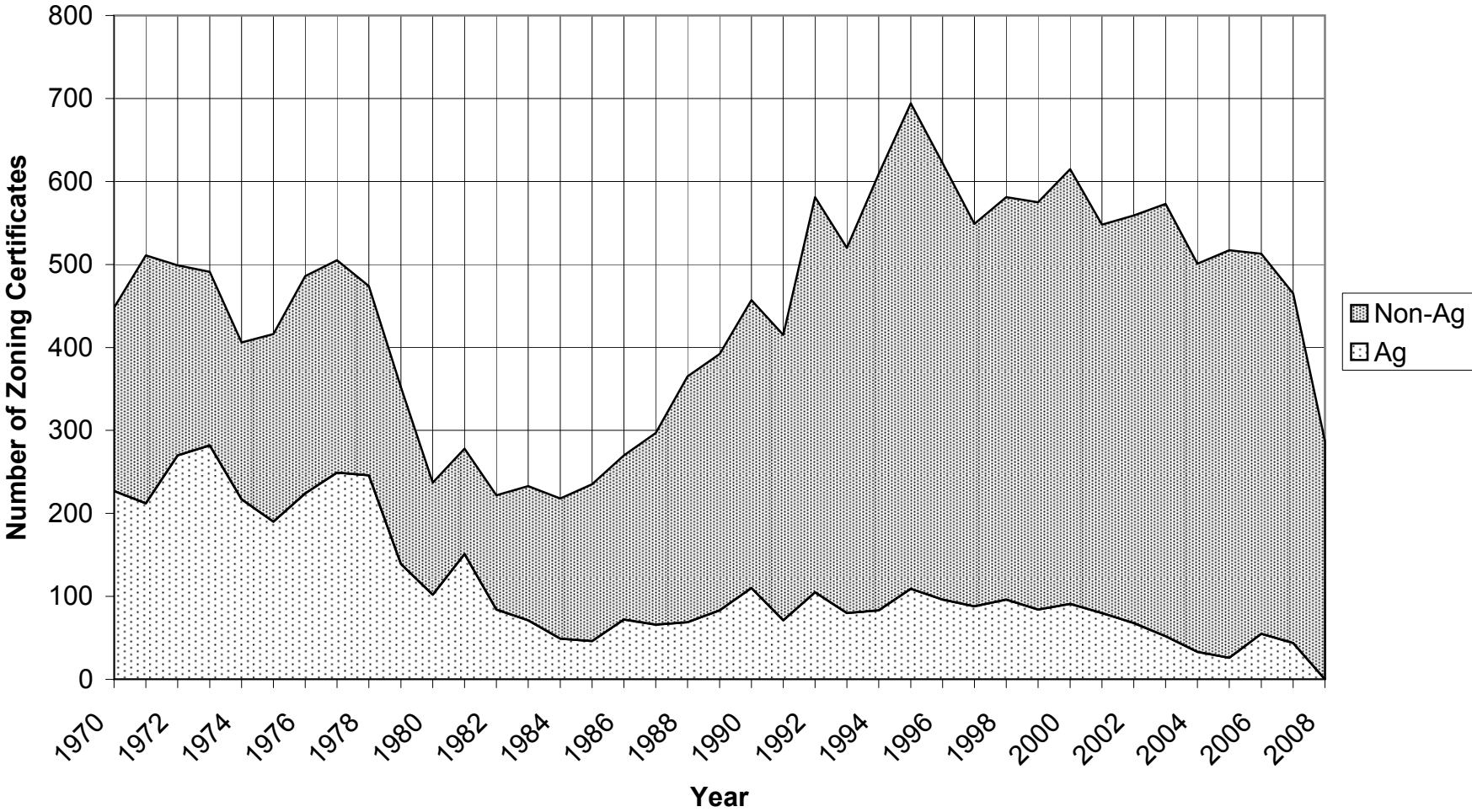
**ZONING CERTIFICATES ISSUED 1970-2008
UNINCORPORATED OGLE COUNTY**

Year	Non-Agricultural	Agricultural	Dwellings
1970	221	227	104
1971	299	212	142
1972	229	270	146
1973	209	282	152
1974	189	217	126
1975	226	190	154
1976	262	224	209
1977	256	249	201
1978	228	246	206
1979	213	139	106
1980	135	102	63
1981	127	151	49
1982	138	84	40
1983	162	71	58
1984	169	49	51
1985	189	46	63
1986	198	72	63
1987	231	66	94
1988	296	69	127
1989	309	83	121
1990	347	110	169
1991	344	71	145
1992	476	105	217
1993	440	80	168
1994	526	83	208
1995	585	109	208
1996	526	96	157
1997	461	88	130
1998	485	96	145
1999	491	84	146
2000	524	91	117
2001	468	80	124
2002	491	68	122
2003	521	52	116
2004	468	33	100
2005	491	26	132
2006	457	54	122
2007	421	44	85
2007	287	52	50

Source: Ogle County Planning & Zoning Department

ZONING CERTIFICATES ISSUED 1970-2008

OGLE COUNTY UNINCORPORATED



DWELLING STARTS 1970 - 2008
OGLE COUNTY UNINCORPORATED

